



## Metal Lockers

hadrian®





## Emperor Corridor Lockers

The clean lines, durability and smooth, quiet operation of Emperor lockers make them the ideal choice for virtually every facility. Available in a wide range of sizes, tiers and designer colors, Emperor lockers are an attractive and effective storage solution.

### **Powder Coated**

- Powder coating outperforms other paint processes by applying a hard, even and run-free finish.
- Powder coating is standard on all Hadrian lockers - without an upcharge.
- Doors and frames may be two-toned at no extra charge.

### **Rigid Door Construction**

- Doors feature a full 1" (25mm) thick double pan welded box design.
- 1" (25mm) thick cell honeycomb is bonded to the inner surface of doors for added impact resistance and silence when closing.

### **Quiet Operation**

- The rigid double pan door design and honeycomb core (spanning the complete width and height of the door) make Hadrian lockers the quietest available.

### **Full-length Continuous "Piano" Hinge**

- This standard Hadrian feature outperforms knuckle hinge designs by adding durability and keeping the door properly adjusted.

### **Single Point Latching with No Moving Parts**

- With no moving parts to replace, Hadrian's single point latching system is a "maintenance dream." There are no slide bars, springs, or latch hooks needed, so doors remain properly adjusted and trouble-free.
- Friction Catch is standard. Positive Latch is also available (with upcharge).

### **Unobstructed Ventilation**

- Louvers in the frame allow for constant, unobstructed air flow that cannot be blocked.
- Perforations in the shelves increase air circulation.

### **Clean Locker Back with No Holes or Exposed Fasteners**

- Ideal for free standing applications where locker backs are exposed.

### **Increased Durability (with Optional Heavy-Duty Door)**

- The long-lasting durability of Emperor lockers can be further increased with an optional 16-gauge outer pan in the door.

### **Easy to Install**

- Hadrian's unique 2 1/2" (64mm) deep frame allows installers more room to work.
- Identically formed and rigid 22 gauge locker tops, hat shelves and bottom shelves are fully interchangeable.
- Use of rivets for assembly drastically decreases installation time.
- Rivets offer extra strength and a tamper-proof fastening solution.
- Your choice of rivets or nuts & screws for assembly.

### **Short Lead Times**

- Hadrian exceeds industry standards with short, reliable lead times that you can count on. With several stock and quick-ship programs (at no additional charge), choosing Hadrian lets you complete your projects on schedule.



## Gladiator Athletic Lockers

With superior strength, airflow, quietness, and a powder coated finish, Gladiators redefine locker room attractiveness. Heavy-duty components integrated with Hadrian's trouble-free and rugged design create the ultimate athletic locker. With fully ventilated doors and sides, Gladiator lockers allow for increased airflow – an absolute must for serious sporting environments.

### **Rigid Door Construction**

- Doors feature a full 1" (25mm) thick double pan box design (16 gauge outer / 18 gauge inner).

### **Maximum Ventilation**

- Fully ventilated doors and sides with 1/2" x 1" (13mm x 25mm) oval perforations allow for maximum air circulation as well as visual access.

### **Quietest Athletic Locker on the Market**

- Hadrian's 1" (25mm) thick cell honeycomb "silence zone" core on single, double and triple tier doors prevents rattling and ensures silence when closing.

### **Single Point Latching with No Moving Parts**

- Hadrian's Gladiators minimize concerns about latching failures in rough athletic locker environments.
- No moving parts results in safe, secure and maintenance-free operation.
- Friction Catch is standard.

### **Heavy-duty 16-Gauge Continuous Piano Hinge**

- This durable continuous hinge is a standard feature on all Gladiator lockers.
- Outperforms knuckle hinge designs by resisting abuse and keeping the door in an adjusted position.

### **Versatility**

- Exposed ends available as solid or perforated.
- Heavier 16-gauge slope tops available (standard slope tops are 20-gauge).

### **Powder Coated Finish**

- Gladiators have the same durable, thick, and even finish as Emperor lockers with the same wide array of cutting edge colors.



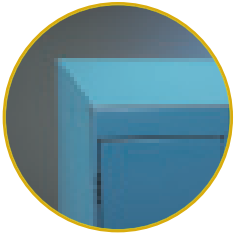
## **Gladiator "Open Front" Lockers**

The ultimate locker for team sporting facilities! Open Fronts are available with many optional upgrades, including; boot locker storage, an upper valuables compartment, extra hooks, a bench, etc.

**Great for college, professional, club, or Olympic sports venues.**

Contact Hadrian for further details.

# Emperor & Gladiator Options



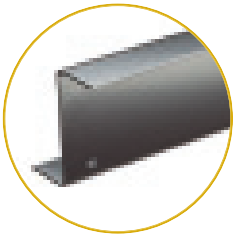
## Sloping Tops

The angle of the sloping top prevents the accumulation of dust and discourages users from stacking unsightly clutter above the locker.



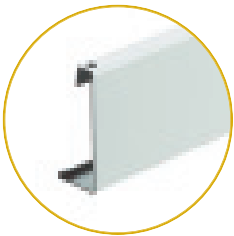
## Individual Galvanneal Box Bases

Adding extra strength and height to lockers, the versatility of Box Bases makes them ideal for installations of any size. Bases are recessed 1 3/4" (44mm) from the locker front to allow for toe space and protection against damage from cleaning. To help withstand damp floor conditions, the base is made from galvanneal steel (at no extra charge).



## Continuous Z-Bases

Hadrian's Continuous Z-Base is a heavy-duty locker support option. The durable 14-gauge base is anchored directly to the floor and elevates the lockers to 4" (102mm) off the ground.



## Recess Top & Side Trim

For recessed applications this 3" (76mm) high trim, for side and top gaps, installs easily. The flat surface of the trim blends with the locker frames for a continuous appearance.

## Plenum Panels

Plenum panels are a great trim solution for between walls situations with a large distance between the bulkhead and locker tops. The plenum panels fit securely into U-channels and sit flush with the locker face (height to suit conditions).



## Locker Benches

Locker benches are available in Hardwood Laminate or Solid Maple.

- Bench size: 1 1/4" x 9 1/2" x length (32mm x 241mm x length).
- Benches are available in the following lengths:

**Feet:** 3, 4, 5, 6, 7, 8, 10, 12

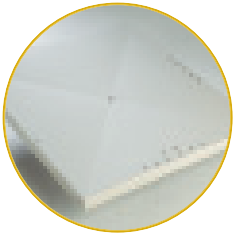
**Millimetres:** 914, 1219, 1524, 1829, 2134, 2438, 3048, 3658

- Your choice of floor anchors for stationary attachment (pedestals are predrilled), or rubber leveling glides for moveable installation.
- Pedestals are 1/4" x 3" (6mm x 76mm) aluminum.
- Modern looking in design, pedestals are powder coated to match decor.



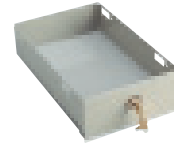
### Coat Rods

Hadrian's coat rod system consists of a heavy-duty chrome plated, 1" O.D. steel coat rod with stainless steel brackets. Heavy duty brackets are also available.



### Drawers

A secure valuables drawer is available for most units.



### Galvanneal Diagonally Embossed Bottom Shelf (with Drain Hole)

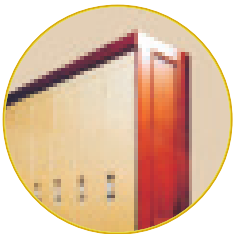
For installations in moist areas, Hadrian's diagonally embossed bottom shelf with a drain hole allows moisture to escape from the locker. Subsequent damage caused by wetness is minimized.

## Specialty Lockers



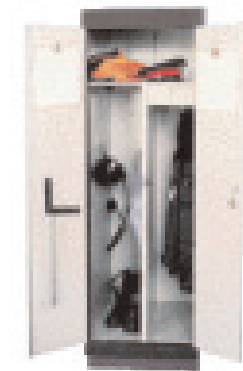
### Galvanneal Lockers

Utilizing high-end galvanneal material in conjunction with Hadrian's state-of-the-art powder coating process results in a metal locker that can better withstand moist conditions. The powder coating covers every area of the locker, inside and out, to help maximize the rust resistant qualities of the galvanneal.



### Custom Applications

The versatility of Hadrian lockers allows for creativity in locker room design. They can be installed in tandem with other materials, such as wood paneling, to achieve an upscale and cost effective installation. Because Hadrian's metal lockers hold fasteners and hinges better than wood, combining them with mill worked sides, tops and bottoms communicates sophistication while offering a more durable installation than fully mill worked lockers. Through the connections and resources of Hadrian's worldwide, full service distribution channel, creative projects can be brought to life!

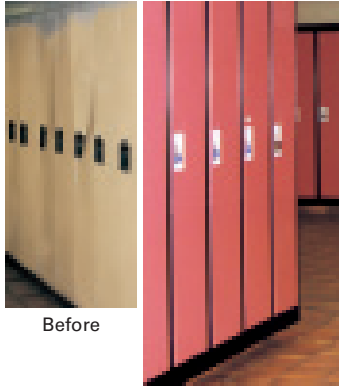


### Divided Lockers

Used extensively by police departments, these multi-purpose lockers are also supplied wherever soiled and clean clothes must share one unit and effective ventilation is a necessity. Typical applications are for the Meat Packing industry, Foundries, Restaurants and Hotels. Special optional features include a drawer with full extension slide (key lock optional), a belt hook, a stainless steel mirror and a night stick receptacle.

# Replacement Fronts

Hadrian's Replacement Fronts are a cost effective solution for renovation projects. This product brings all the benefits of Hadrian's rigid door design to old existing lockers.



Before

After

honeycomb filled doors



- Ideal, effective, and economic alternative to a complete locker tear out and new locker installation.
- Hadrian's Replacement Front "re-faces" most any other brand (manufacturer) of lockers.
- The Replacement Front offers the full impact resistant and "silent operation" benefits of Hadrian's heavy-duty double pan, honeycomb filled doors.
- Existing locker bodies are utilized, thereby eliminating the possibility of damage to tiling, pipe-work, drywall etc. while removing old lockers.
- The versatility of Hadrian's replacement front allows you to convert a single tier locker to a double tier locker (or vice versa) with just minor alterations.
- With only 8 fasteners per front, maintenance staff can retrofit lockers without causing major disruption during class hours. The ease of retrofitting lockers with replacement fronts means the school does not need to be "shut down" and "torn apart" to renovate.

**Hadrian's quality solution to Retro-fit  
cost, time and convenience**

## Install in two easy steps!

1. Remove the old door, hasp, hinges and any other components that are proud of the frame.
2. Place the Hadrian Replacement Front frame directly on top of the old frame. Invisible attachment is made with self-tapping screws applied through eight enlarged ventilation louvers. Metal plates welded with the frame channel, flush with their back surface, provide solid joining points. The "Front" is only 1-1/8" (29mm) deep, and the attachment is snug, clean, functionally correct and attractive.



Replacement Fronts are recommended for padlock (not built-in) locking and available as single and double tier in sizes 12" (305mm), 15" (380mm) and 18" (457mm) wide and 60" (1524mm) or 72" (1829mm) high.



# Powder Coating

## Superior Technology

Because Hadrian refuses to compromise on quality, powder coating has been our standard painting process since introducing lockers. Hadrian's two state-of-the-art powder coating systems utilize the latest technology to apply a hard, even, run-free finish. After a thorough cleaning and phosphatizing process, electrical charges ensure that the powder paint adheres uniformly over the entire product surface. The powder is then oven cured to create an attractive, permanent and consistent finish.



## Durable, High Performance Finish

Hadrian's powder coated finish completely covers every area of the product while exceeding the performance capabilities of liquid coated baked enamel finishes. The surface is hard, with a run-free finish that resists impact, abrasions, chemicals, detergents and acids.



## Rust Resistant

Powder coated cold rolled steel (which is Hadrian's standard for lockers – with no upcharge) outperforms and resists rust better than liquid painted electro-galvanized steel (which is an upcharge option for other manufacturers). For the ultimate in rust resistant lockers, Hadrian's upcharge option features a full galvanneal product with our superior powder coated finish.

Thicker paint application helps to combat rust. Powder coating allows for a greater paint thickness to be applied without compromising surface uniformity. Wet paints simply cannot achieve the same thickness without the threat of unsightly runs and surface irregularities.



## Cutting Edge Colors

The flexibility of powder coating allows Hadrian to offer a color selection that is always on the cutting edge. From smooth flat finishes to "special effects", anti-graffiti and custom colors, Hadrian lockers feature the most progressive color palette available.

Emperor lockers feature doors, frames and accessories painted in a wide range of standard colors while the interior (unexposed) body parts are #535 Light Grey.

Gladiator lockers are typically painted the same color inside and out. However, they may also be two-toned if desired, with body parts always painted the same color as the frames.



## Environmentally Responsible

Hadrian is proud of the fact that its powder coating system is also environmentally friendly. There is virtually no waste, low energy consumption, and no solvent emissions.

**attractive, permanent and consistent finish**  
[www.hadrian-inc.com](http://www.hadrian-inc.com)

# Sizing Chart

## Standard Sizes for Emperor & Gladiator Lockers

72" / 1830mm High					
Width	Depth (inches / mm)				
	12 / 305	15 / 380	18 / 455	21 / 535	24 / 610
<b>Single Tier</b>					
10" (255mm)	E	E	E	E	E
12" (305mm)	X	X	X	X	X
15" (380mm)	X	X	X	X	X
18" (455mm)	X	X	X	X	X
<b>Double Tier</b>					
10" (255mm)	E	E	E	E	E
12" (305mm)	X	X	X	X	X
15" (380mm)	X	X	X	X	X
18" (455mm)	X	X	X	X	X
<b>Triple Tier</b>					
12" (305mm)	X	X	X	X	X
15" (380mm)	X	X	X	X	X
<b>Four Tier</b>					
12" (305mm)	X	X	X	X	X
<b>Six Tier</b>					
12" (305mm)	X	X	X	X	X

60" / 1524mm High					
Width	Depth (inches / mm)				
	12 / 305	15 / 380	18 / 455	21 / 535	24 / 610
<b>Single Tier</b>					
10" (255mm)	E	E	E	E	E
12" (305mm)	X	X	X	X	X
15" (380mm)	X	X	X	X	X
18" (455mm)	X	X	X	X	X
<b>Double Tier</b>					
10" (255mm)	E	E	E	E	E
12" (305mm)	X	X	X	X	X
15" (380mm)	X	X	X	X	X
18" (455mm)	X	X	X	X	X
<b>Triple Tier</b>					
12" (305mm)	E	E	E	E	E
15" (380mm)	E	E	E	E	E
<b>Four Tier</b>					
12" (305mm)	E	E	E	E	E
<b>Five Tier</b>					
12" (305mm)	E	E	E	E	E

**X = Available in Emperor and Gladiator**

**E = Available in Emperor only**

OTHER SIZES AND TIER SELECTIONS ALSO AVAILABLE



single tier



double tier



triple tier



four tier



five tier



six tier

**Hadrian lockers allow for creativity in locker room design**

# Locking Options

Hadrian lockers can be prepared to accept the following locking options:

## Padlocks (Standard)

### Standard Dudley Padlock



- Non-keyable.
- One combination.

**Part Number: 790050**

### Master #1525 Key Controlled Padlock



- Supervisory key control.
- One combination.

**Part Number: 790051**

## Key Locks

### Master #1710 Dead Bolt Cylinder Lock



- Manual deadbolt.
- Key can be removed in locked position only.
- Keyed alike (option).
- Master keyed (option).
- Group keyed (option).

**Part Number: 780056**

## Built-in Combination Locks

### Master #1670 Built-in Combination Lock



- Manual locking deadbolt.
- Master key control.
- 5 combinations.

**Part Number: 790052**

### Master #1652 Built-in Combination Lock



- Extra long locking bolt.
- Spring-bolt automatic locking.

**Part Number: 790053**

## Coin-operated Locks

- **Safe-o-mat Coin Return** and **Coin Collect** lock systems must be ordered from Hafele America Co. or Hafele Canada.  
[www.hafele.com](http://www.hafele.com)
- Coin Collect system is not suitable for 6 tier lockers.

## Superior Products Fast, Reliable Lead Times



With short, reliable lead times and outstanding stock programs, choosing Hadrian helps you complete projects on time and hassle-free

# hadrian®

## IN THE U.S.A.:

Hadrian Inc., 7420 Clover Avenue,  
Mentor, Ohio, U.S.A. 44060  
telephone: (440) 942-9118 • fax: (440) 942-9618  
U.S. toll free fax: 1-800-536-1469

## IN CANADA & AREAS OTHER THAN U.S.A.:

Hadrian Manufacturing Inc., 965 Syscon Road,  
Burlington, Ontario, Canada L7L 5S3  
telephone: (905) 333-0300 • fax: (905) 333-1841  
Canada toll free fax: 1-888-817-7701



For Specifications, please visit:

[www.hadrian-inc.com](http://www.hadrian-inc.com)

Also see us in:

**McGraw Hill**  
**CONSTRUCTION Sweets**  
[www.sweets.com](http://www.sweets.com)

**ARCAT**  
[www.arcat.com](http://www.arcat.com)

 **Mixed Sources**  
Product group from well-managed  
forests and other controlled sources  
[www.fsc.org](http://www.fsc.org) Cert no. SW-COC-002429  
© 1996 Forest Stewardship Council